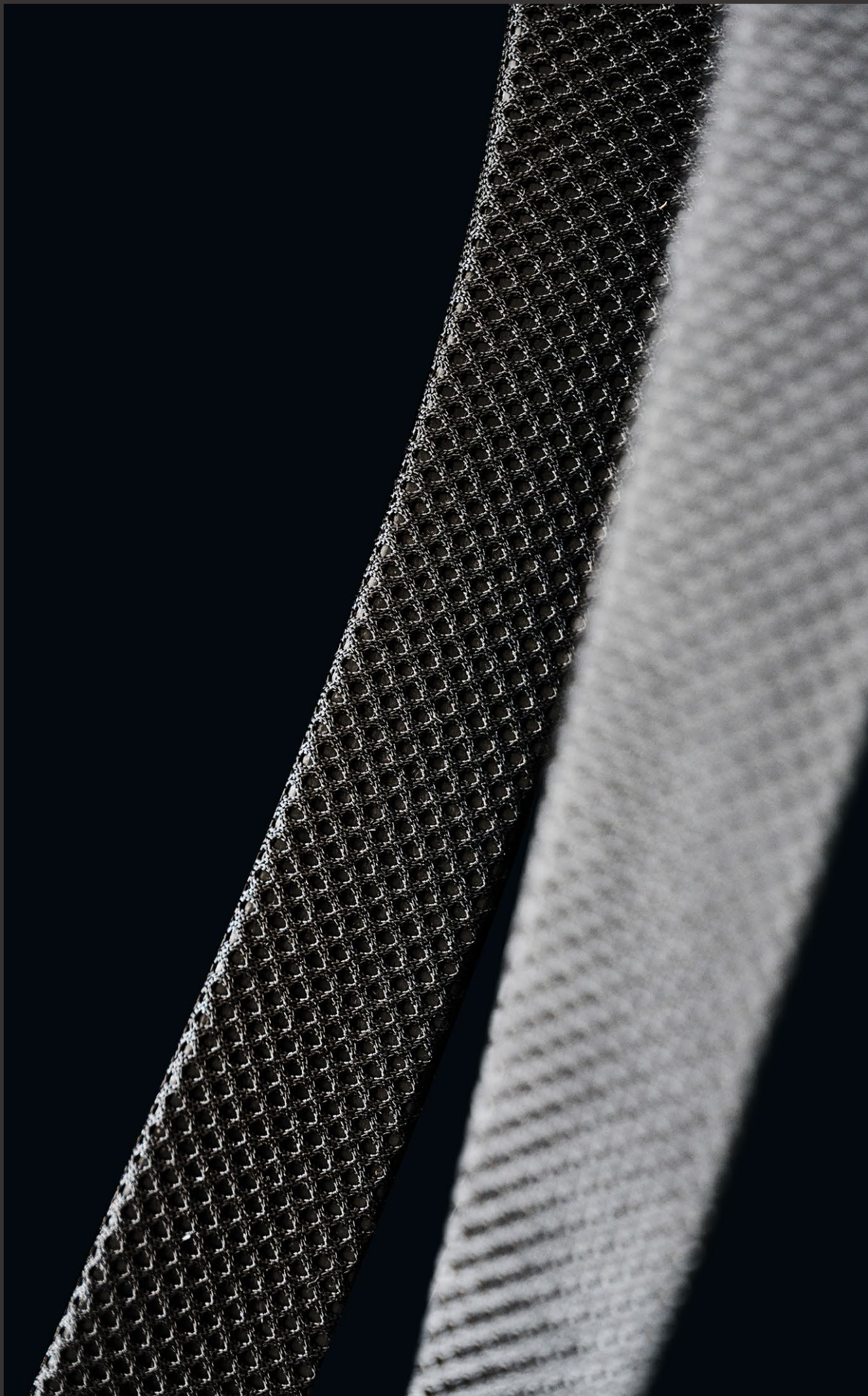


# TESSUTI

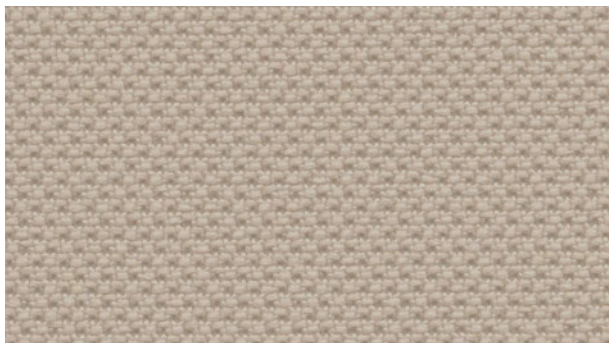


italiansedioliti®



**Cat. 1**

**ALBA**



AB 6



Composizione - *Composition* - Composition:

**100% Poliestere - 100% Polyester - 100% Polyester**

Peso - *Weight* - Poids: **320 g/m<sup>2</sup>**

Resistenza all'abrasione (cicli) - *Abrasion resistance (rubs)*  
Résistance à l'abrasion (tours):

**100.000 Martindale**



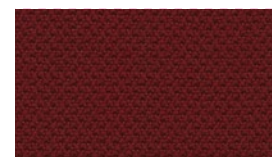
AB 7



AB 8



AB 13



AB 14



AB 9



AB 5



AB 4



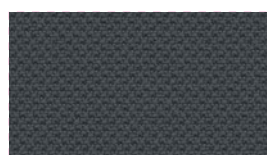
AB 3



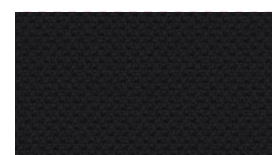
AB 10



AB 11



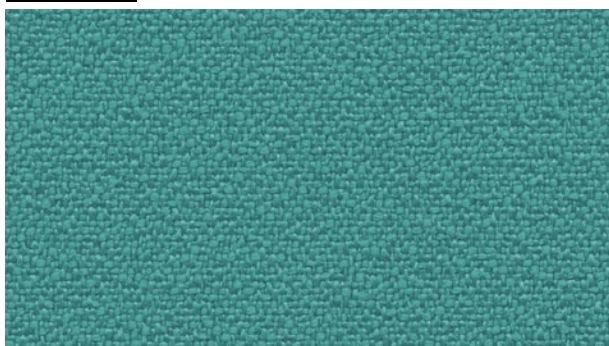
AB 12



AB 1

**Cat. 1**

**BONDAY**



BD 6



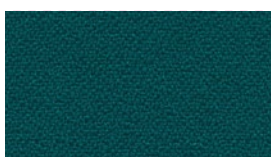
Composizione - *Composition* - Composition:

**100% Poliestere - 100% Polyester - 100% Polyester**

Peso - *Weight* - Poids: **250 g/m<sup>2</sup>**

Resistenza all'abrasione (cicli) - *Abrasion resistance (rubs)*  
Résistance à l'abrasion (tours):

**150.000 Martindale**



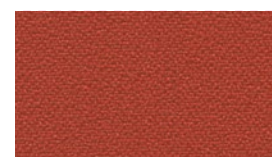
BD 10



BD 9



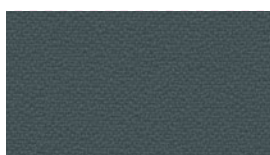
BD 11



BD 3



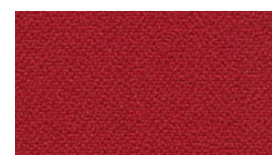
BD 13



BD 12



BD 5



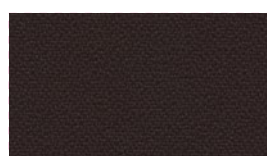
BD 2



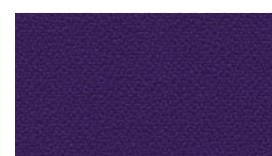
BD 4



BD 1



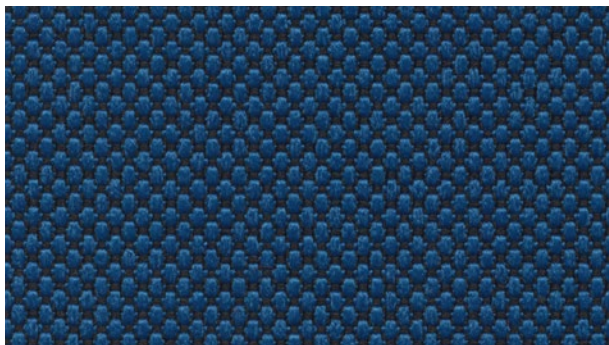
BD 8



BD 7

**Cat. 2**

**BERLIN**



BL 14



Composizione - Composition - Composition:

**100% Poliestere FR - 100% Polyester FR - 100% Polyester FR**

Peso - Weight - Poids: **400 g/m<sup>2</sup>**

Resistenza all'abrasione (cicli) - Abrasion resistance (rubs)  
Résistance à l'abrasion (tours):

**80.000 Martindale**



BL 13



BL 4



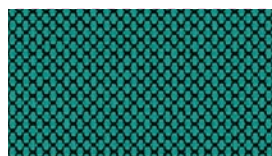
BL 9



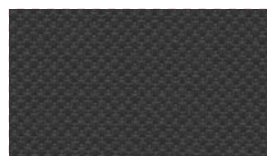
BL 15



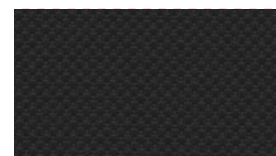
BL 7



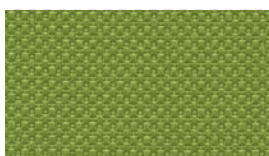
BL 17



BL 12



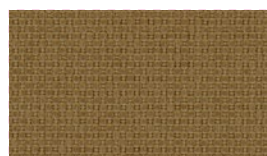
BL 10



BL 6



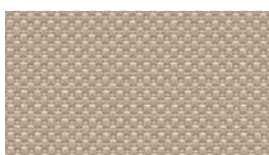
BL 16



BL 5



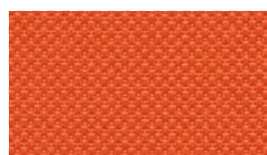
BL 8



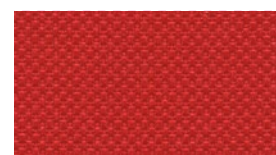
BL 11



BL 22



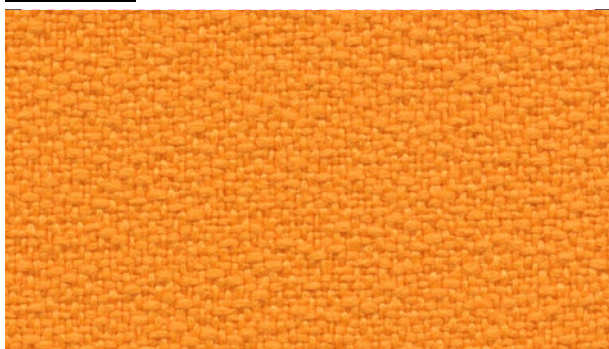
BL 3



BL 1

**Cat. 2**

**KING**



KN 10



Composizione - Composition - Composition:

**100% Poliestere Trevira CS - 100% Polyester Trevira CS**  
**100% Polyester Trevira CS**

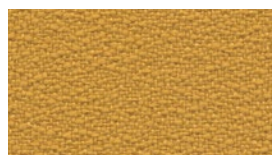
Peso - Weight - Poids: **300 g/m<sup>2</sup>**

Resistenza all'abrasione (cicli) - Abrasion resistance (rubs)  
Résistance à l'abrasion (tours):

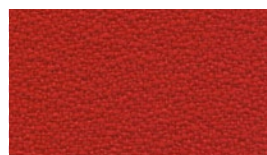
**100.000 Martindale**



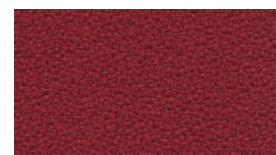
KN 20



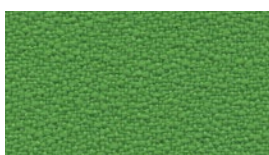
KN 12



KN 9



KN 4



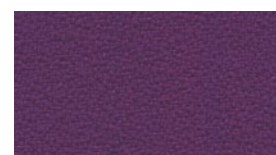
KN 25



KN 37



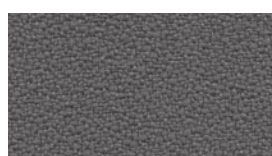
KN 3



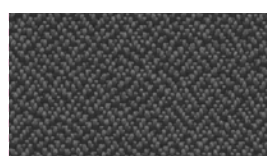
KN 23



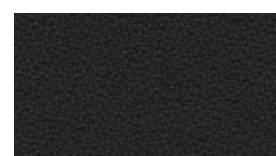
KN 5



KN 18



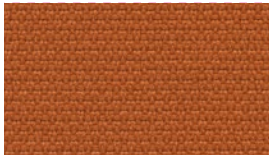
KN 22



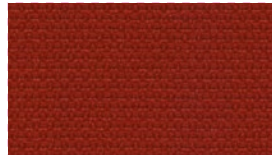
KN 1

**Cat. 2****MINI**

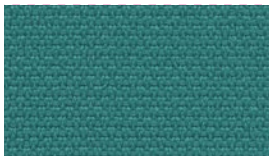
MN 11



MN 2



MN 1



MN 7



MN 8



Composizione - Composition - Composition:

**100% Poliestere Trevira CS - 100% Polyester Trevira CS**  
**100% Polyester Trevira CS**

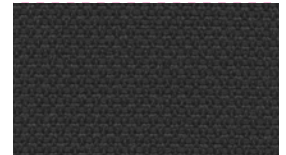
Peso - Weight - Poids: **340 g/m<sup>2</sup>**

Resistenza all'abrasione (cicli) - Abrasion resistance (rubs)  
 Résistance à l'abrasion (tours):

**100.000 Martindale**



MN 9



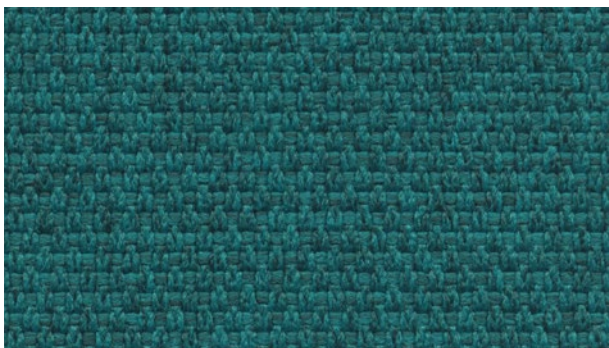
MN 10



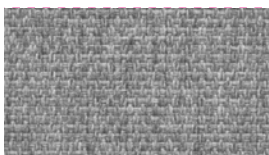
MN 3



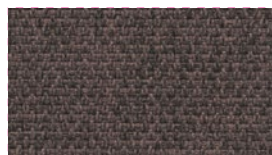
MN 4

**Cat. 3****MINI MELANGE**

MLG 6



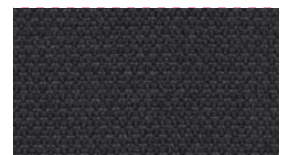
MLG 9



MLG 11



MLG 8



MLG 10



MLG 12



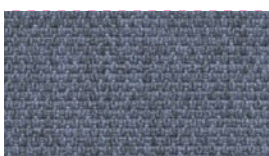
MLG 13



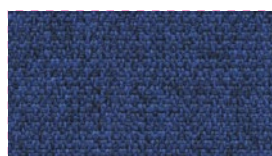
MLG 2



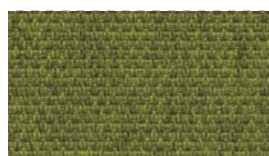
MLG 1



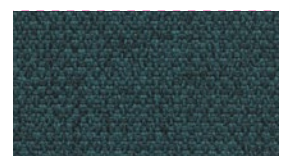
MLG 3



MLG 4



MLG 5



MLG 7



Composizione - Composition - Composition:

**100% Poliestere Trevira CS - 100% Polyester Trevira CS**  
**100% Polyester Trevira CS**

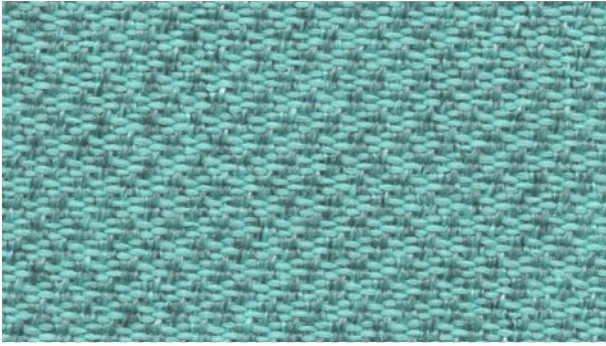
Peso - Weight - Poids: **340 g/m<sup>2</sup>**

Resistenza all'abrasione (cicli) - Abrasion resistance (rubs)  
 Résistance à l'abrasion (tours):

**100.000 Martindale**

**Cat. 3**

**SEALIFE**



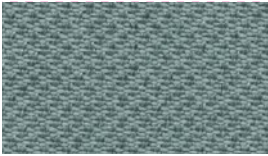
SF 3



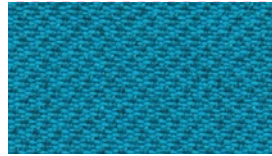
Composizione - *Composition* - Composition:  
**100% Poliestere riciclato - 100% Recycled Polyester**  
**100% Polyester recyclé**

Peso - *Weight* - Poids: **330 g/m²**

Resistenza all'abrasione (cicli) - *Abrasion resistance (rubs)*  
 Résistance à l'abrasion (tours):  
**100.000 Martindale**



SF 7



SF 4



SF 5



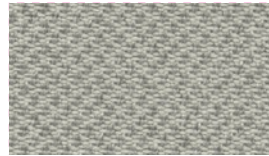
SF 8



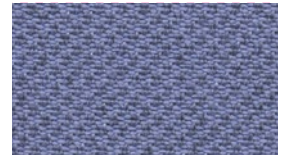
SF 10



SF 11



SF 13



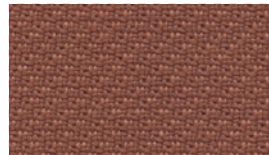
SF 6



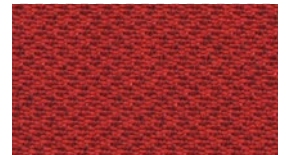
SF 9



SF 12



SF 2



SF 1

**Cat. 4**

**LANA**



LN 1



Composizione - *Composition* - Composition:  
**100% Pura lana vergine - 100% Pure wool - 100% Pure laine**

Peso - *Weight* - Poids: **410 g/m²**

Resistenza all'abrasione (cicli) - *Abrasion resistance (rubs)*  
 Résistance à l'abrasion (tours):  
**50.000 Martindale**



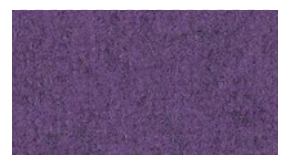
LN 5



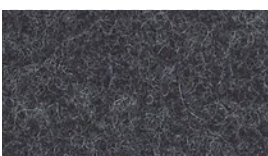
LN 6



LN 7



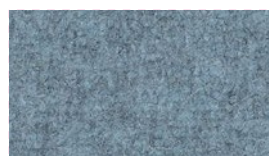
LN 8



LN 10



LN 4



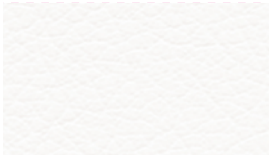
LN 3



LN 9

**Cat. 2****INCA**

IC 10



IC 6



IC 16



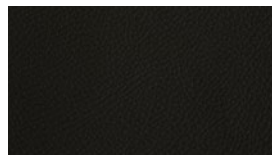
IC 17



IC 8



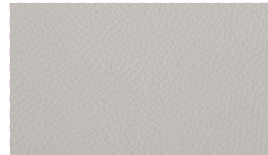
IC 4



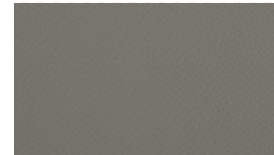
IC 1



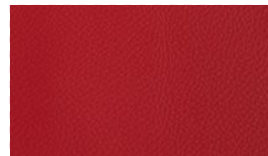
Composizione - Composition - Composition:

**88% PVC - 8% PES - 4% COT**Peso - Weight - Poids: **650 g/m<sup>2</sup>**Resistenza all'abrasione (cicli) - Abrasion resistance (rubs)  
Résistance à l'abrasion (tours):**200.000 Martindale**

IC 3



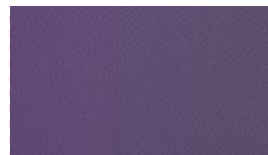
IC 2



IC 9



IC 20



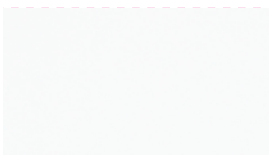
IC 23



IC 5

**Cat. 3****AUREA MOOD**

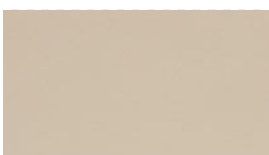
AM 14



AM 1



AM 23



AM 4



AM 18



AM 9



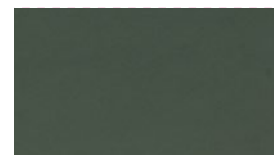
AM 10



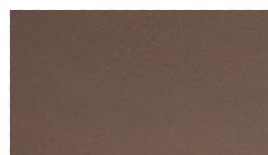
Composizione - Composition - Composition:

**72% PVC - 25% COT - 3% PU**Peso - Weight - Poids: **600 g/m<sup>2</sup>**Resistenza all'abrasione (cicli)  
Abrasion resistance (rubs)  
Résistance à l'abrasion (tours):**100.000 Martindale**

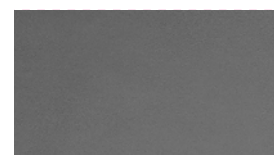
AM 24



AM 16



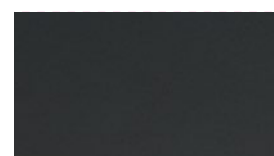
AM 27



AM 28



AM 11



AM 26

## PELLE



PL 15



Composizione - Composition - Composition:

**100% Pelle bovina smerigliata e conciata**

**100% Genuine leather**

**100% Cuir véritable**

Spessore - Depth - Epaisseur: **0,9/1 mm**



PL 6



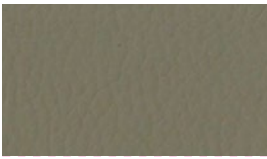
PL 10



PL 7



PL 4



PL 16



PL 9



PL 20



PL 3



PL 2



PL 1



Pelle con concia ecologica e/o pelle ignifuga disponibile su richiesta. Contatta un nostro commerciale per maggiori informazioni.  
*Leather with ecological tanning and/or fire-resistant leather available upon request. Contact our sales representative for more information.*  
 Cuir avec tannage écologique et/ou cuir ignifuge disponible sur demande. Contactez notre commercial pour plus d'informations.

## RETE



RT 4



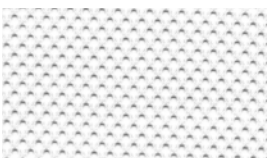
Composizione - Composition - Composition:

**100% Poliestere - 100% Polyester - 100% Polyester**

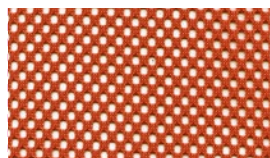
Peso - Weight - Poids: **330 g/m<sup>2</sup>**

Resistenza all'abrasione (cicli) - Abrasion resistance (rubs)  
 Résistance à l'abrasion (tours):

**100.000 Martindale**



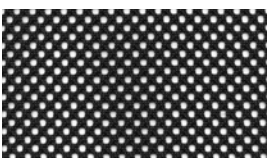
RT 2



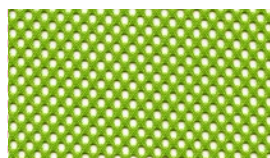
RT 5



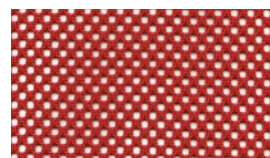
RT 9



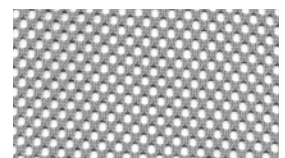
RT 1



RT 7

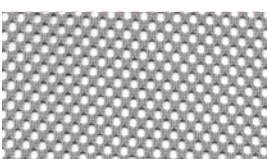


RT 6

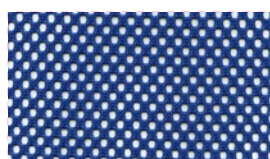


RT 3

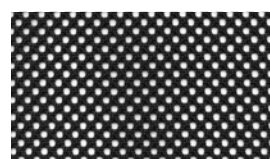
## RETE IGNIFUGA



RT IGN 3



RT IGN 4



RT IGN 1





Nome tessuto <i>Fabric name</i> Nom du tissu	Resistenza al fuoco <i>Flammability</i> Classement au feu	Solidità allo sfregamento <i>Fastness to rubbing</i> Solidité au frottement  EN ISO 105-X12	Solidità alla luce <i>Light fastness</i> Solidité à la lumière  EN ISO 105-B02	Pilling  EN ISO 12945-2
<b>ALBA</b>	UNI 9175 Class 1 IM EN 1021-1 & 2 BS Crib 5 BS 7176 Class Medium Hazard California TB117	4/5 (scala dei grigi)	6 (scala dei blu)	5
<b>BONDAY</b>	UNI 9175 Class 1 IM EN 1021-1 & 2 BS 5852 Crib 5 BS 7176 Medium Hazard NF D 60013 AM 18 California TB117:2013	4/5 (scala dei grigi)	6 (scala dei blu)	5
<b>BERLIN</b>	UNI 9174 - 8456 Class C1 UNI 9175 Class 1 IM DIN 4102 Class B1 NF 92501-7 Class M1 NF D 60013 Class AM18 EN 1021-1 & 2 BS Crib 5 BS 7176 Class Medium Hazard EN 13773 Class 1 OENORM 3800-1 Class B1,Q1,TR1 California TB117 USA NFPA 701 USA NFPA 260	4/5 (scala dei grigi)	6 (scala dei blu)	5
<b>KING</b>	UNI 9174 - 8456 Class C1 UNI 9175 Class 1 IM DIN 4102 Class B1 NF 92501-7 Class M1 NF D 60013 Class AM18 EN 1021-1 & 2 BS Crib 5 BS 7176 Class Medium Hazard EN 13773 Class 1 OENORM 3800-1 Class B1,Q1,TR1 California TB117 USA NFPA 701 USA NFPA 260 IMO Part 8 Upholstery	4/5 (scala dei grigi)	6 (scala dei blu)	5
<b>MINI &amp; MINI MELANGE</b>	UNI 9174 - 8456 Class C1 UNI 9175 Class 1 IM DIN 4102 Class B1 NF 92501-7 Class M1 NF D 60013 Class AM18 EN 1021-1 & 2 BS Crib 5 BS 7176 Class Medium Hazard EN 13773 Class 1 OENORM 3800-1 Class B1,Q1,TR1 California TB117 USA NFPA 701 USA NFPA 260 IMO Part 8 Upholstery	4/5 (scala dei grigi)	6 (scala dei blu)	5
<b>SEALIFE</b>	UNI 9175 Class 1 IM EN 1021-1 & 2 BS 7176 Class Low Hazard California TB 117:2013	4/5 (scala dei grigi)	6 (scala dei blu)	5
<b>LANA</b>	1 IM UNI 9175 EN 1021-1 & 2:2006 California TB 117:2013 IMO NPFA260-2019 EN 13772:2011 BS5852-1:1979	4/5 (scala dei grigi)	5 (scala dei blu)	5
<b>INCA</b>	Classe 1IM - UNI 9175 California TB 117:2013 - FMVSS 302 UNI EN 1021-1 & 2:2014 BS 5852 : 2006 source 0 & source 1	4 (scala dei grigi)	4/5 (scala dei grigi) EN ISO 4892-2 B1&B2	/
<b>AUREA MOOD</b>	UNI 9175 classe 1IM EN 1021-1 & 2 BS 5852-1 cigarette test BS 5852-1 match test California TB 117:2013 IMO res. A.652(16)	5 (scala dei grigi)	6/7 (scala dei blu)	/
<b>PELLE IGNIFUGA</b>	UNI 9175:2010 1IM UNI 9175:1987 UNI 9175_FA:1994 3IM	4 (scala dei grigi)	6 (scala dei blu)	/
<b>RETE IGNIFUGA</b>	UNI 8457(1987)-UNI 8457/A1(1996) RAPP.PROVA CL.1 SEDIA RIGIDA-N.524.0 UNO 180/8 UNI 9174(1987)-UNI 9174/A1(1996) RAPP.PROVA CL.1 SEDIA RIGIDA-N.524.0 UNO 180/8 EN 1021 Part 1-2 using a CM Foam 35 Kg/cu.m.	4/5 (scala dei grigi)	6 (scala dei blu)	5





I colori della cartella tessuti fotografica possono differire dalla cartella tessuti reali. Si consiglia di verificare la tonalità desiderata.

*The colors of the photographic fabric folder may differ from the actual fabric samples. It is recommended to verify the desired shade.*

Les couleurs du nuancier de tissus photographique peuvent différer des échantillons de tissus réels. Il est conseillé de vérifier la teinte souhaitée.

## italiansedioliti

**SEDE EMILIA ROMAGNA** - LEGALE & OPERATIVA

Via Luciano Lama, 93 - 47035 Gambettola (FC), Italy

**SEDE LOMBARDIA** - OPERATIVA

Via Leone Tolstoj, 37 - 20098 San Giuliano Milanese (MI), Italy

Tel. +39 0543 096 616  
info@italiansedioliti.it